

SUMEX Sustainability Framework



Environmental sustainability

Social and societal responsibility

Transforming the economy (i.e. considering the Green Deal)

Baseline legal compliance

Responsible mining



Partner with host communities and society to deliver a shared vision of the future

Engage in continuous dialogue with stakeholders, create trusted grievance mechanisms and shared investigation and problem-solving processes

Safeguard human rights

Protect cultural heritage, i.e. regarding indigenous people and ensure free, prior and informed consent

Adhere to ethical corporate practices (no support of corruption, no bribes)

Diversity, inclusion & anti-discrimination (i.e. gender, young and old, indigenous people)

Share data and information transparently (incl. payments and revenues, environmental and social data)

Improving workers' well-being (zero harm, improved skills, fair compensation and terms of work, involvement)

Planning beyond the mine life (clear time horizons, after mine life use, reclamation of land towards prior or societally relevant use, extraction as an enabler for succeeding activities/livelihoods)

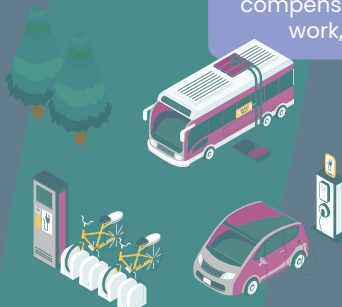
Holistic risk management and emergency preparedness

Defining what „benefit sharing“ means (beyond taxes and jobs)

Accountability (i.e., life-cycle considerations and product labelling, various capitals, reporting)

Valuing all forms of capital, i.e. natural and social capital

2030 Achievement of Sustainable Development Goals (SDGs)



Integrated, watershed-based water stewardship (incl. a focus on water efficiency and avoidance of freshwater use)

Holistic management and continuous learning (systems thinking, company and site impacts, the ability to learn from mistakes, social/peer learning, reflexivity, continuous monitoring and reporting)

Extractives' role in closing cycles, both biological and technological (beyond recycling, focus on reduction/dematerialisation, multiple use and redesign of products)

Efficient energy consumption, based on renewable energy

Carbon neutrality

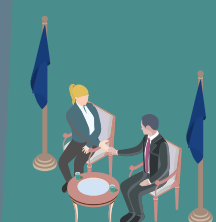
Zero harmful air emissions

Arrangement of different land uses (spatial and temporal) and net positive impact on ecosystem services and biodiversity (incl. from indirect impacts)

Advanced waste management (considering secondary resources from traditional waste by-products, zero waste to landfill, no impact on surrounding environment)

Understanding of the role and indicators for extractives in an inclusive Green Economy that exists within Planetary Boundaries (incl. innovation for technology "jumps", new business models, consumption patterns and "needs" considerations, linkages to other parts of the economy)

2050 Sustainable management of the extractive industry



This project has received funding from the European Union's Horizon 2020 research and innovation programme under grant agreement n° 101003622